

SPECIAL NOTES

1. Fly ash and fly based materials are to be used for construction.
2. There is not any water body (pond) in the plot.
3. Solar panels are provided at roof top for generation of energy or energy equivalent to 1% of the connected load.

PROJECT

REVISED PLAN PROPOSAL FOR PLOT NO. 13/3A, C.A. (W/O. CO. 12.31) & C.A. (W/O. BK. 4) STORED (40 MTS HEIGHT) RESIDENTIAL BUILDING UNDER MIZLA CHAPRA, 4 NO. 15, S. / L.P. DADON - 141/144(P) (P) 248/270(P) 271/272/276/277/280 - UNDER PATRAN CHATA GRAM PANCHAYAT, P.O. & P.S. RAJAHAT, NORTH 24 PARGANAS, KOLKATA - 700135. SUPERSEDING PREVIOUS MEMO NO. 8297 / NKDA / BPS 04(53)/2020. DATED - 02 / 08 / 21.

WINDOW SCHEDULE

NO.	WIDTH	HEIGHT	SILL	DESCRIPTION
W 1	1500	1500	2250	ALUM. GLASS DOUBLE WINDOW
W 2	1500	1500	450	ALUMINA CASSET WINDOW
W 3	1500	1500	2250	ALUMINA CASSET WINDOW
W 4	1500	1500	2250	ALUMINA CASSET WINDOW
W 5	1500	1500	2250	ALUMINA CASSET WINDOW
W 6	1500	1500	2250	ALUMINA CASSET WINDOW
W 7	1500	1500	2250	ALUMINA CASSET WINDOW
W 8	1500	1500	2250	ALUMINA CASSET WINDOW
W 9	1500	1500	2250	ALUMINA CASSET WINDOW
W 10	1500	1500	2250	ALUMINA CASSET WINDOW
W 11	1500	1500	2250	ALUMINA CASSET WINDOW
W 12	1500	1500	2250	ALUMINA CASSET WINDOW
W 13	1500	1500	2250	ALUMINA CASSET WINDOW
W 14	1500	1500	2250	ALUMINA CASSET WINDOW
W 15	1500	1500	2250	ALUMINA CASSET WINDOW
W 16	1500	1500	2250	ALUMINA CASSET WINDOW
W 17	1500	1500	2250	ALUMINA CASSET WINDOW
W 18	1500	1500	2250	ALUMINA CASSET WINDOW
W 19	1500	1500	2250	ALUMINA CASSET WINDOW
W 20	1500	1500	2250	ALUMINA CASSET WINDOW
W 21	1500	1500	2250	ALUMINA CASSET WINDOW
W 22	1500	1500	2250	ALUMINA CASSET WINDOW
W 23	1500	1500	2250	ALUMINA CASSET WINDOW
W 24	1500	1500	2250	ALUMINA CASSET WINDOW
W 25	1500	1500	2250	ALUMINA CASSET WINDOW
W 26	1500	1500	2250	ALUMINA CASSET WINDOW
W 27	1500	1500	2250	ALUMINA CASSET WINDOW
W 28	1500	1500	2250	ALUMINA CASSET WINDOW
W 29	1500	1500	2250	ALUMINA CASSET WINDOW
W 30	1500	1500	2250	ALUMINA CASSET WINDOW
W 31	1500	1500	2250	ALUMINA CASSET WINDOW
W 32	1500	1500	2250	ALUMINA CASSET WINDOW
W 33	1500	1500	2250	ALUMINA CASSET WINDOW
W 34	1500	1500	2250	ALUMINA CASSET WINDOW
W 35	1500	1500	2250	ALUMINA CASSET WINDOW
W 36	1500	1500	2250	ALUMINA CASSET WINDOW
W 37	1500	1500	2250	ALUMINA CASSET WINDOW
W 38	1500	1500	2250	ALUMINA CASSET WINDOW
W 39	1500	1500	2250	ALUMINA CASSET WINDOW
W 40	1500	1500	2250	ALUMINA CASSET WINDOW
W 41	1500	1500	2250	ALUMINA CASSET WINDOW
W 42	1500	1500	2250	ALUMINA CASSET WINDOW
W 43	1500	1500	2250	ALUMINA CASSET WINDOW
W 44	1500	1500	2250	ALUMINA CASSET WINDOW
W 45	1500	1500	2250	ALUMINA CASSET WINDOW
W 46	1500	1500	2250	ALUMINA CASSET WINDOW
W 47	1500	1500	2250	ALUMINA CASSET WINDOW
W 48	1500	1500	2250	ALUMINA CASSET WINDOW
W 49	1500	1500	2250	ALUMINA CASSET WINDOW
W 50	1500	1500	2250	ALUMINA CASSET WINDOW
W 51	1500	1500	2250	ALUMINA CASSET WINDOW
W 52	1500	1500	2250	ALUMINA CASSET WINDOW
W 53	1500	1500	2250	ALUMINA CASSET WINDOW
W 54	1500	1500	2250	ALUMINA CASSET WINDOW
W 55	1500	1500	2250	ALUMINA CASSET WINDOW
W 56	1500	1500	2250	ALUMINA CASSET WINDOW
W 57	1500	1500	2250	ALUMINA CASSET WINDOW
W 58	1500	1500	2250	ALUMINA CASSET WINDOW
W 59	1500	1500	2250	ALUMINA CASSET WINDOW
W 60	1500	1500	2250	ALUMINA CASSET WINDOW
W 61	1500	1500	2250	ALUMINA CASSET WINDOW
W 62	1500	1500	2250	ALUMINA CASSET WINDOW
W 63	1500	1500	2250	ALUMINA CASSET WINDOW
W 64	1500	1500	2250	ALUMINA CASSET WINDOW
W 65	1500	1500	2250	ALUMINA CASSET WINDOW
W 66	1500	1500	2250	ALUMINA CASSET WINDOW
W 67	1500	1500	2250	ALUMINA CASSET WINDOW
W 68	1500	1500	2250	ALUMINA CASSET WINDOW
W 69	1500	1500	2250	ALUMINA CASSET WINDOW
W 70	1500	1500	2250	ALUMINA CASSET WINDOW
W 71	1500	1500	2250	ALUMINA CASSET WINDOW
W 72	1500	1500	2250	ALUMINA CASSET WINDOW
W 73	1500	1500	2250	ALUMINA CASSET WINDOW
W 74	1500	1500	2250	ALUMINA CASSET WINDOW
W 75	1500	1500	2250	ALUMINA CASSET WINDOW
W 76	1500	1500	2250	ALUMINA CASSET WINDOW
W 77	1500	1500	2250	ALUMINA CASSET WINDOW
W 78	1500	1500	2250	ALUMINA CASSET WINDOW
W 79	1500	1500	2250	ALUMINA CASSET WINDOW
W 80	1500	1500	2250	ALUMINA CASSET WINDOW
W 81	1500	1500	2250	ALUMINA CASSET WINDOW
W 82	1500	1500	2250	ALUMINA CASSET WINDOW
W 83	1500	1500	2250	ALUMINA CASSET WINDOW
W 84	1500	1500	2250	ALUMINA CASSET WINDOW
W 85	1500	1500	2250	ALUMINA CASSET WINDOW
W 86	1500	1500	2250	ALUMINA CASSET WINDOW
W 87	1500	1500	2250	ALUMINA CASSET WINDOW
W 88	1500	1500	2250	ALUMINA CASSET WINDOW
W 89	1500	1500	2250	ALUMINA CASSET WINDOW
W 90	1500	1500	2250	ALUMINA CASSET WINDOW
W 91	1500	1500	2250	ALUMINA CASSET WINDOW
W 92	1500	1500	2250	ALUMINA CASSET WINDOW
W 93	1500	1500	2250	ALUMINA CASSET WINDOW
W 94	1500	1500	2250	ALUMINA CASSET WINDOW
W 95	1500	1500	2250	ALUMINA CASSET WINDOW
W 96	1500	1500	2250	ALUMINA CASSET WINDOW
W 97	1500	1500	2250	ALUMINA CASSET WINDOW
W 98	1500	1500	2250	ALUMINA CASSET WINDOW
W 99	1500	1500	2250	ALUMINA CASSET WINDOW
W 100	1500	1500	2250	ALUMINA CASSET WINDOW

NOTES

1. All dimensions are in mm or otherwise should be brought to the notice of consultant before starting the work.
2. This drawing appertains to the drawings in the ratio of 1:5 & 1:4 respectively & outside plastering contains water proofing.
3. This drawing should be read only and not to be scaled as per IS: 1176.
4. All R.C.C. work should be done as per specifications mentioned in the structural drawings.
5. Structural measures shall be taken at the time of construction of semi-underground reservoir.
6. Depth of water reservoir shall not be more than the depth of main column.
7. All external walls are 200, 180 thk. and all internal walls are 100 thk. unless otherwise specified.
8. For details of reinforcement & RCC work refer structural drawings.
9. The top slab of the U.G.R. is structurally safe for taking load of heavy vehicles like fire tender.

UNDERTAKING BY THE OWNER

1. I/We confirm that the building operation to be undertaken shall be strictly in accordance with the approved drawings and specifications thereunder.
2. I/We confirm that no building material shall be used in the building, except as shown in building plan, as laid out hereon to the proposed building.

SIGNATURE OF OWNER / DEVELOPER (CONSULTED ATTORNEY)
 Mailing address: Merin Office, 22, Prince Anwar Shah Rd, Kolkata, West Bengal 700033

CERTIFICATE OF THE ARCHITECT:

I certify that all the Architectural Drawing of the project prepared by me complying with the New Town Kolkata Building Rules, 2014. I also certify that the drawings are prepared in accordance with the provisions of the National Building Code of India as per the prevailing National Building Code of India. If any incorrect information is furnished by me or any violation of provision of National Building Code of India is observed in the drawings, I shall not be held responsible therefor. The drawings and documents prepared by me are submitted to the Competent Authority for obtaining sanction.

DECLARATION OF GEO-TECHNICAL ENGINEER

It is certified that the comprehensive Geo-Technical report on soil investigation has been prepared by me for design and calculation of the foundation by carrying the soil samples constructed. It also shows the nature of the soil after excavation of the soil to the foundation extended up to appropriate depth that have been processed in the Geo-technical report.

CERTIFICATE OF THE CIVIL/STRUCTURAL ENGINEER:

I certify that the structural drawing and design of both the foundation and the building structure are in accordance with the provisions of the National Building Code of India and the regulations made under the act) and also considering all possible loads, seismic load and the moments generated by the building. I also certify that the design is safe and stable in all respect and these provisions shall be adhered to during the construction.

SANJIV P. PARIKH
 ARCHITECT
 10, S. K. ROAD, CHITRA KUNDA, KOLKATA - 700016
 TEL: 91-33-2465-1138 / 4139
 E-MAIL: info@sanjivparikh.com
 WEBSITE: www.sanjivparikh.com

ARCHITECTURAL DRAWING

BLOCK 1: B1-G1-12
 FLOOR PLAN
 SECTION AT A-A & SECTION AT B-B

SCALE: 1:100
 DRAWING NO: ARCH/SANC/01/8
 DATE: _____

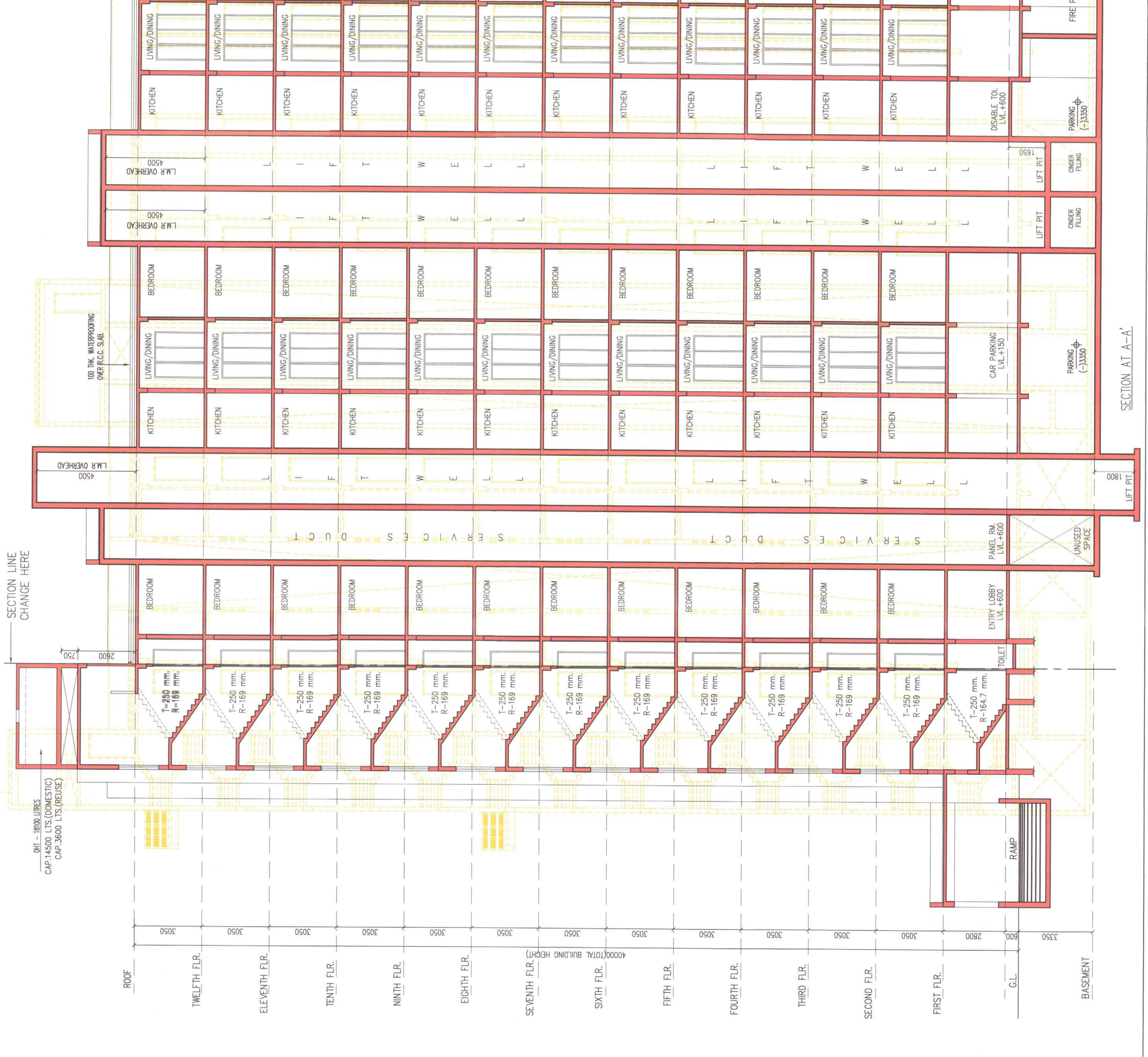
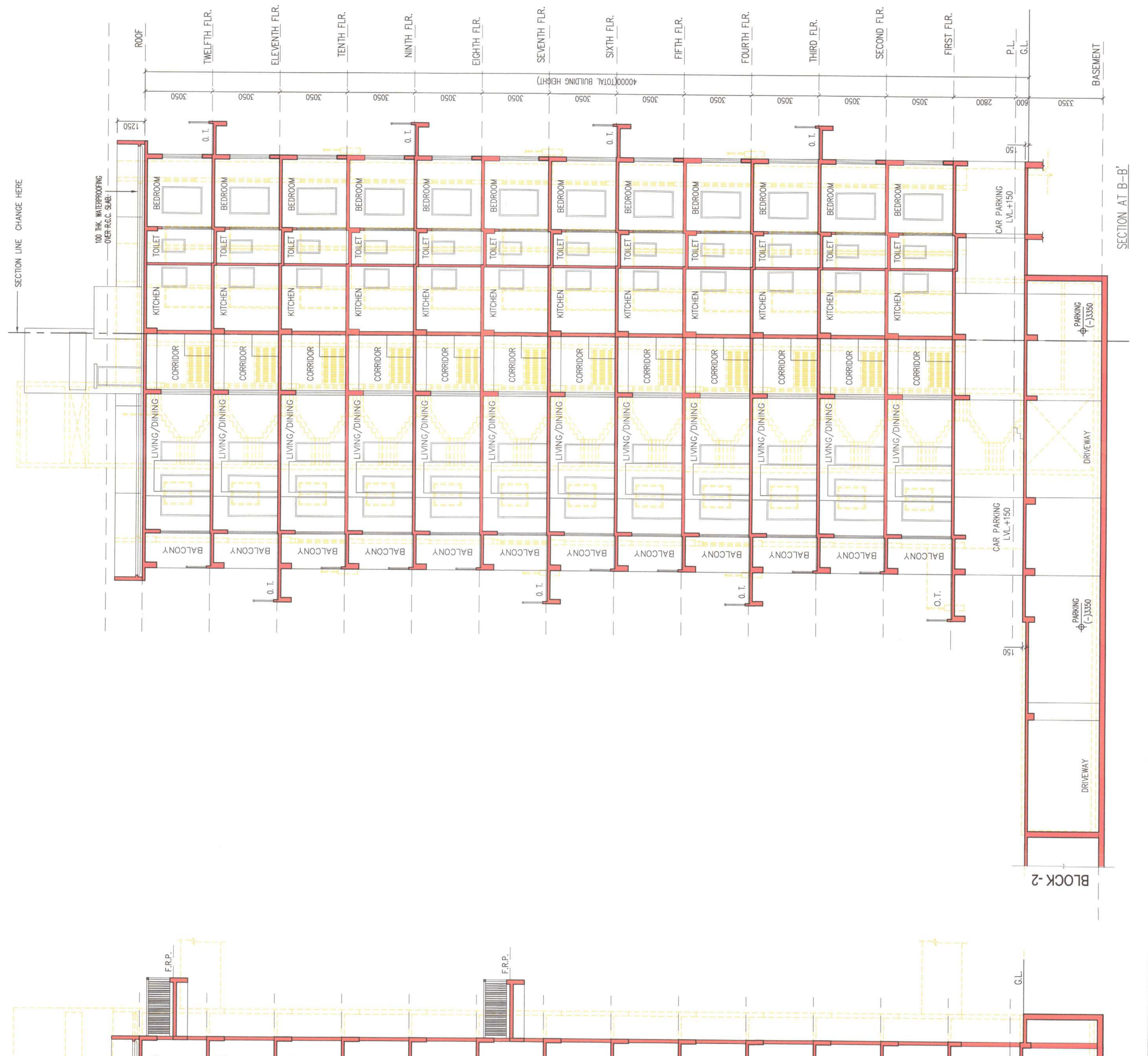
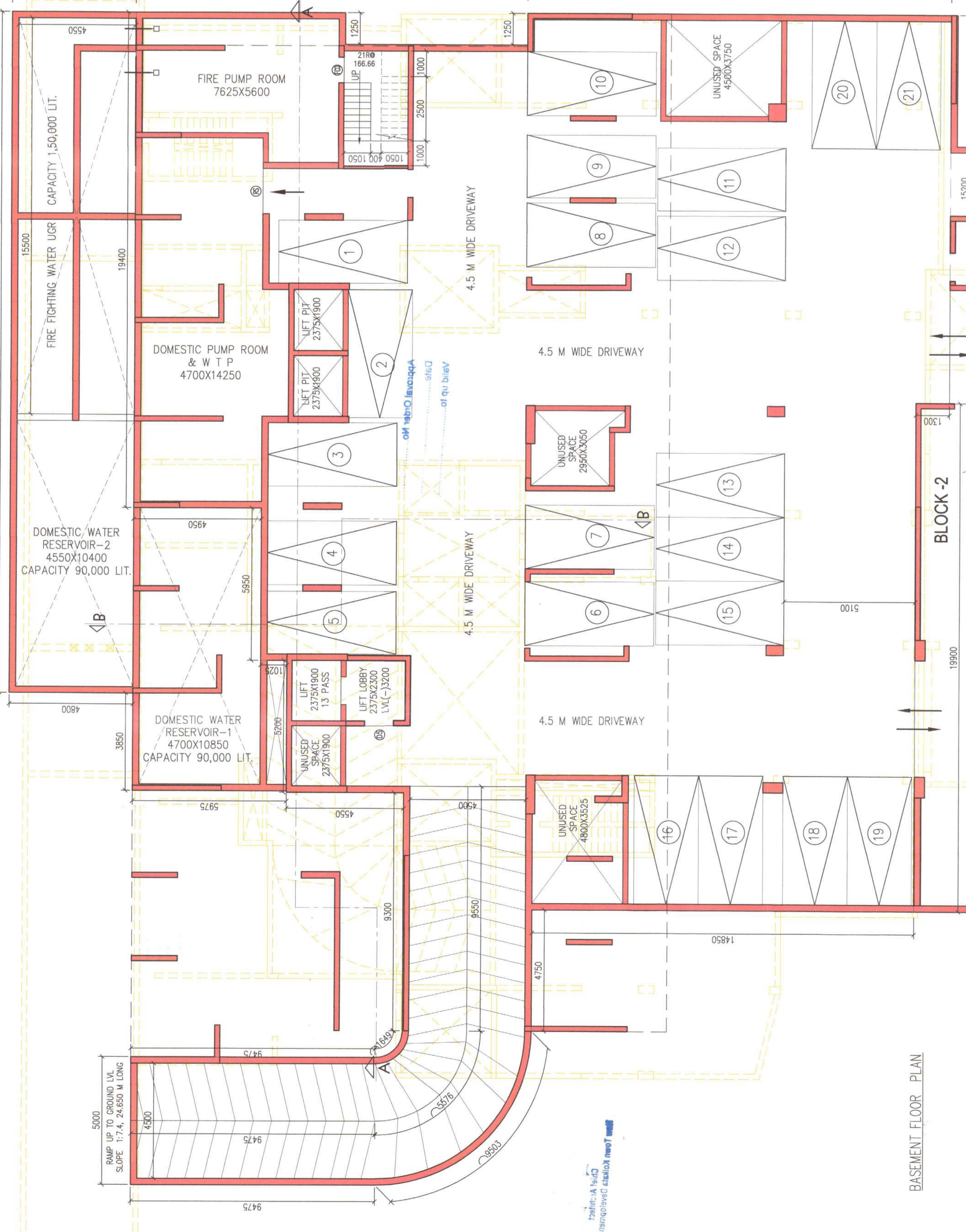
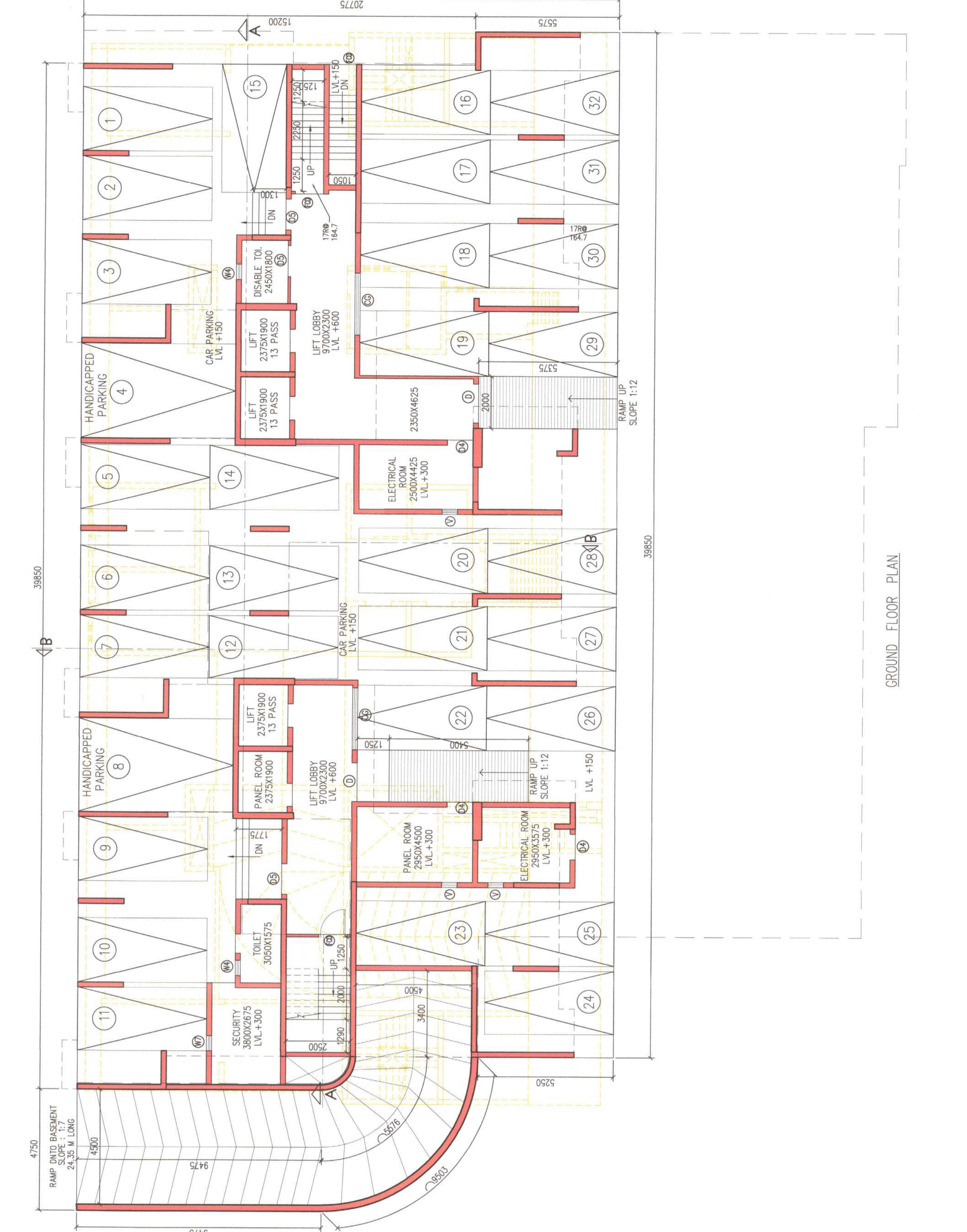
ARCHITECT: SANJIV P. PARIKH
 REGISTERED ARCHITECT NO: 40546
 E-MAIL: info@sanjivparikh.com
 WEBSITE: www.sanjivparikh.com

ENGINEER: PRASANTA KUMAR GHOSH
 REGISTERED ENGINEER NO: 40546
 E-MAIL: info@sanjivparikh.com
 WEBSITE: www.sanjivparikh.com

SECTION AT A-A
 SECTION AT B-B

DATE: _____

BLOCK 1
 B1-G1-12



DATE: 10/10/2024
TIME: 10:30 AM

- 1. PROJECT: **CHANDRA**
- 2. STRUCTURAL ENGINEER: **SHRI RAMESH**
- 3. STRUCTURAL DESIGNER: **SHRI RAMESH**
- 4. ARCHITECT: **SHRI RAMESH**

Note: This NCC has been issued on the basis of the information provided by the applicant. The Engineer is not responsible for any errors or omissions in the drawings or specifications. The applicant is responsible for ensuring that the drawings and specifications are in accordance with the relevant codes and standards.

REVISIONS: 01
REVISION: 01
REVISION: 01
REVISION: 01
REVISION: 01

SACTIONED & APPROVED

Sanctioning Officer
Rajshree Parbhayast Samity
Bajajhat, North 24 Parganas

Approved On: 10/10/2024
Date: 10/10/2024
Valid up to: 10/10/2024

NEW TOWN KOLKATA DEVELOPMENT AUTHORITY
No Objection Certificate for
Sanctioning of Building Plans

Memo No: **704/1834/BS/190/2023**
Date: **10.05.2024**
Building Particulars
REVISIONS: 01
REVISION: 01
REVISION: 01
REVISION: 01
REVISION: 01

Assistant Architect
New Town Kolkata Development Authority

